

ADYA INTERIORS PRIVATE LIMITED

Assetive team

Eccletic creation

Inventive in concepts

Perspective thoughts

Quixtic towards target

Balanced with associates

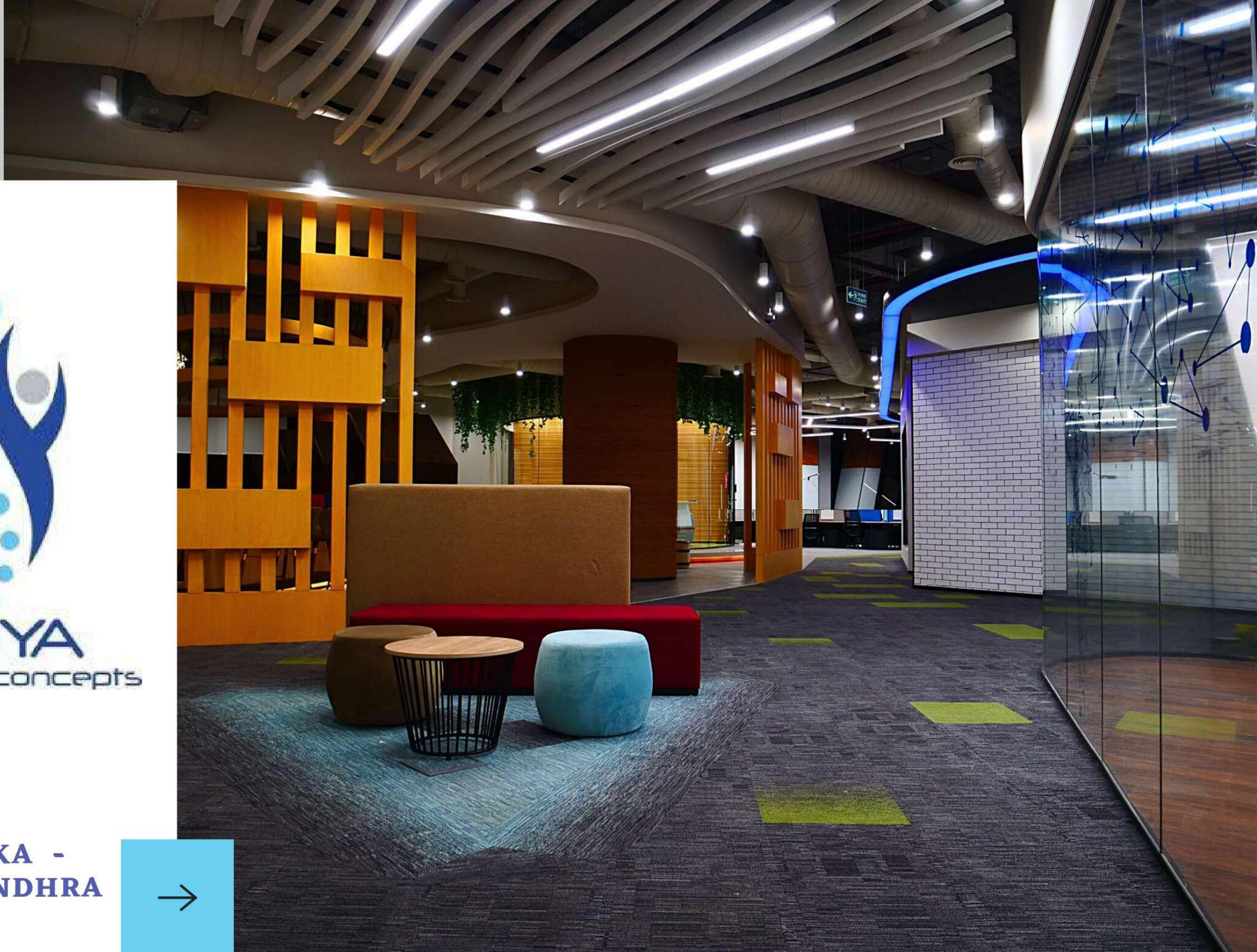
Focussed in commitments

Tenacious in our quality policy

Insightful in design and detailing



**TAMILNADU - KARNATAKA -
KERALA - TELANGANA - ANDHRA
PRADESH**



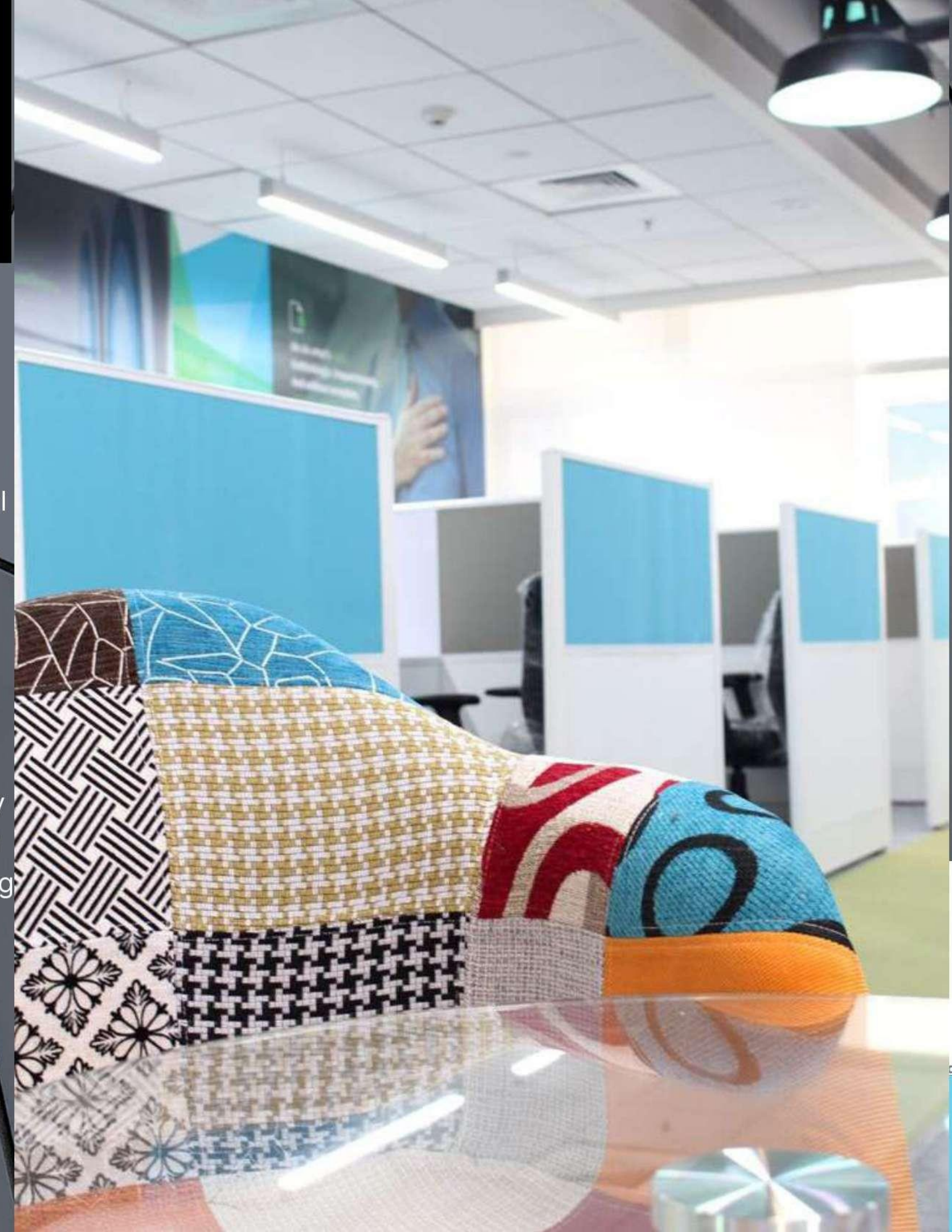
About us

Licensed Interior company

Having established our roots in 2010, as 'Adya interiors private limited' heads a team of experts and experienced. Our organization involves itself interior designing, turnkey contracting, services and solutions touching on interior execution. We design and execute all types of interior for Corporate, Commercial offices and Residences, Retail and Health care interiors that have urban stylish and dazzling aesthetics. We strive to execute the best piece of work for our esteemed clients.

We are resilient, maintaining relationships through professional, experienced, competent and above all passionate staff.

Paying attention to detail and communicating honestly. We appreciate that every project is unique with its own set of challenges and provides a tailored approach to meet the scheme objectives. Our service including understanding and shaping our client's dream into reality. We set ourselves apart from our competitors by respecting your budget, timeline and unique needs as a client.



Mission

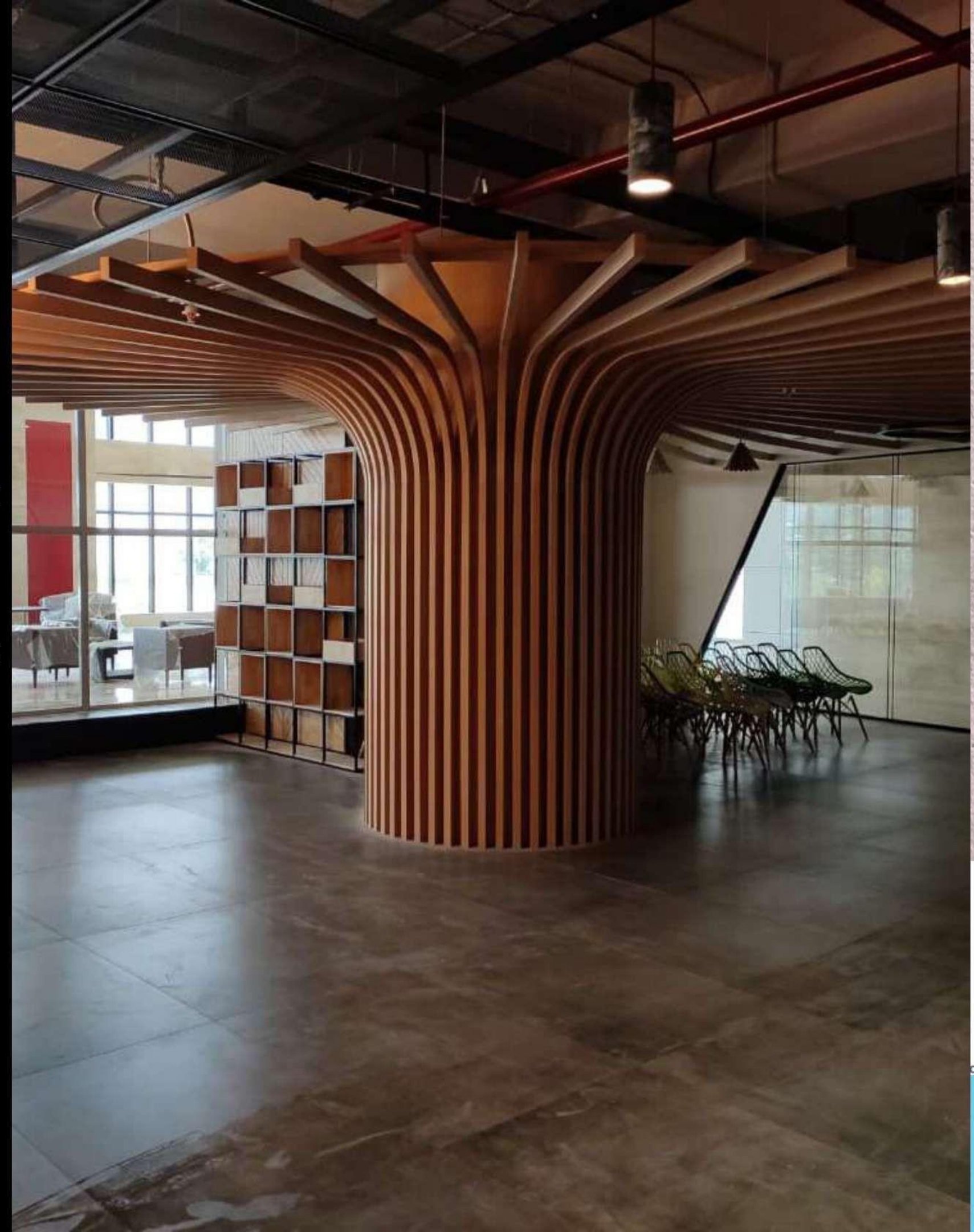
To create interiors that reflect the client's personality and lifestyle, by capturing their design dreams and making them a reality. Also listen to clients in a professional manner and carry out the design process until the desired product is achieved.

Vision

Elevate our standards to a new level by adapting to the newest trends and technology to serve our clients by providing designing services for properties that are both personal and cost effective. Also, deliver the projects on time and on budget with an unsurpassed budget attention to detail.

Our Team & Our Pride

Our policy of meticulously selecting our team members has rewarded us with the best in industry team-comprising of the Interior designers & Engineers. The team aided with advanced technology, the ambiance and the work environment make remarkable designs of the project undertaken.





Our Services

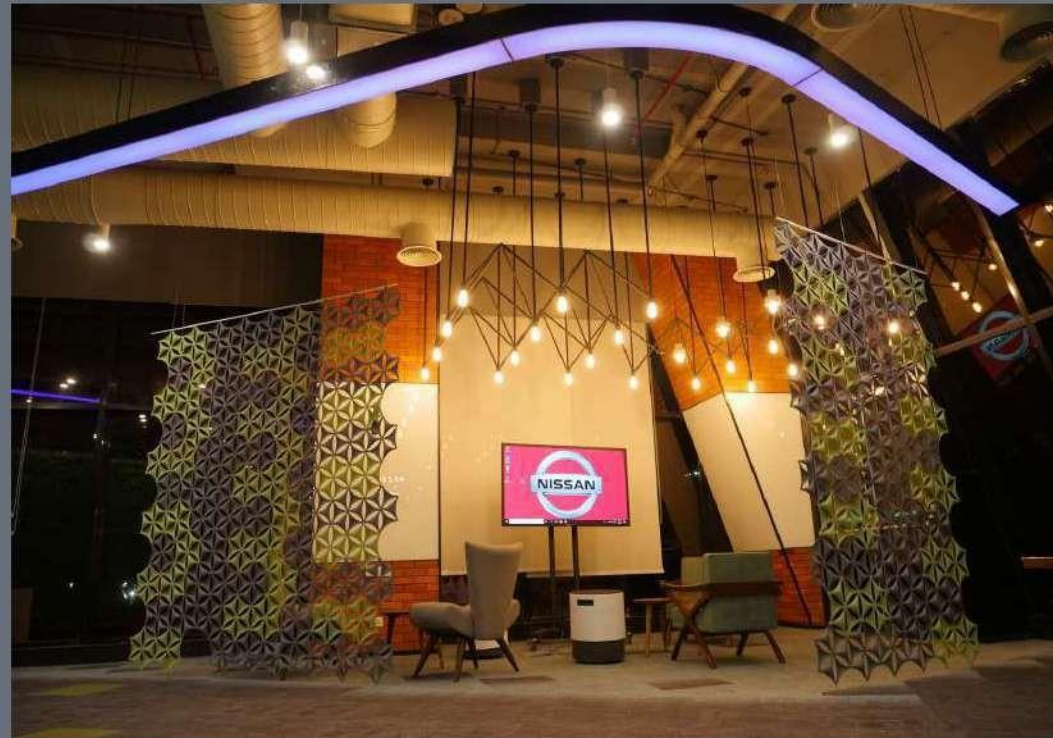
We being part of the industry understand the demands of the market in terms of distinctive architecture and decor .Our highly dedicated and experienced team is committed to executing quality work, providing our clients a customer -friendly approach not only during planning and completion but even after that. Our services span across

- 1.Turnkey interiors
- 2.Civil & Interior works
- 3.Electrical works
- 4.HVAC
- 5.Fire and safety
- 6.Networking

- 7.Access & CCTV
- 8.Sprinkler works
- 9.Plumbing work
- 10.BMS
- 11.Modular Furniture
- 12.Carpets

Whether it is a complete Refurbishment or you are starting with a new project we transform your space into a modern efficient workspace. Our services cover all elements of interior contracting. Our concentrated approach ensures quality delivery on time and budget.

HIGHLIGHTS



EXPERTISE

- Corporate Interior Designing & Execution
- Contract Turnkey Projects
- Retail showrooms Designing and execution
- Health care Interior Designing & execution
- Residential Interior Designing & execution

DESIGN & DELIVERY

- Iterative Design process
- Ongoing liaison responding to client & Design team
- Project Coordination
- Benchmarking
- Technical submission
- Practical completion

INTANGIBLE ELEMENTS

- Better Decisions
- Quality Certainty
- More focused on creativity
- Better Project Strategy
- Better Delivery
- Better cost certainty
- Design & Space planning

Key Services

01 EXPERIENCE

With experience that extends beyond conventional office environments and into retail ,healthcare ,residential and more. We also had experience in turnkey projects and awareness of other services and integration. We successfully completed 500+ projects till date. Good relations with local authorities by way of CSR activities and 100% compliance to regulatory and statutory requirements. We had working experience with multiple architects. A comprehensive approach to total customer satisfaction with a constant and consistent focus on quality and attention to detail culminating in repeat business

02 ECO FRIENDLY

Adya aspires to the highest level of design quality, coupled with care and concern for our staff, the communities in which we live and work, and our shared planet. We design green without compromising quality and style Benefit from cost effective and energy efficient improvements .Live free of toxins and exposure to harmful radiations in your place. Eco- conscious interior design firm "Adya interiors private limited" is committed to preserving ecological sustainability and enhancing the well being of our clients.The process can include Energy star appliances, Restoration and refinishing, Heating and air balancing, grey water systems , Biodegradable wool carpets,Recycled metal and glass, reclaimed wooden flooring, No VOC paints and insulation, Sustainable forest products,Solar wind and energy systems ,Local sourcing and manufacturing, Natural and LED lighting etc

03 SUSTAINABLE PRACTICES

Sustainability is essential to our design philosophy and is integrated with our thinking from the start of any project. Designing to reduce energy demand is the prime way to minimize further add on measures through the series of design stages

This process can include:

- re-use of existing buildings and materials and flexibility for future change - minimising use of new materials
- building modelling that directly reduces energy demand
- active and passive renewable energy sources
- integrating new projects into the urban infrastructure
- use of energy and resource efficient materials, methods and forms and, most importantly, careful consideration of the well-being of the end-user

Life cycle of Project



Project Kickoff

Define and outline the brief with the client



Initiation Stage

Understand the goals, priorities, deadlines and risk of the project.



Planning Stage

Outline the tasks and timeline required to execute on the project.



Execution Stage

Turn your plan into action and monitor the project performance.



Closure Stage

Analyze the results summarize key learnings and plan the next step.



Finally Goal reached

The Safe way is the Only way

1. START WITH SAFETY TRAINING

We start with site-specific induction training for all workers, to point out any high risk areas and provide instructions for emergency management.

2. MINIMISE AND MANAGE RISK

We avoid many common safety issues by conducting regular safety audits and having procedures in place to report, assess and address potential risks.

3. SITE SECURITY

We allocate strict security and safety protocols which will also protect contractors from liability and negligence in the case of a safety incident or security breach.

4. SAFE WORK METHOD ASSESSMENT

A safe work method statement (SWMS) were prepared for all high risk construction projects, before work commences.

5. USE CLEAR SIGNAGE THROUGHOUT THE SITE

We provide visible signage to indicate site amenities (such as toilets), entry and exit points, and first aid or emergency fire equipment.

6. FIRST AID

We practice to provide one first aid officer per 25 workers. First aid kits and equipment must be placed in an easily accessible area on site.

7. PROVIDE PERSONAL PROTECTIVE (PPS) EQUIPMENT

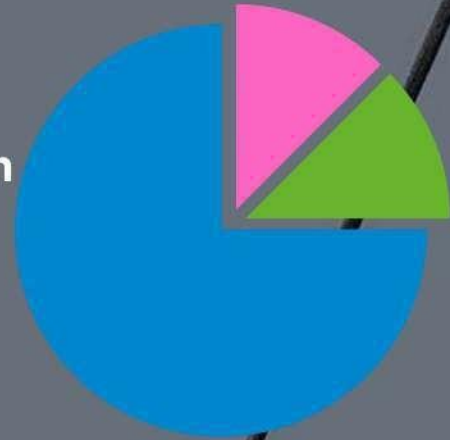
In many situations an employer is obligated to provide PPS such as high vis vests, safety goggles and safety harnesses to construction site workers.



QUALITY CONTROL

01 ANALYZE

To examine briefly about the design and execution of the project for smooth running.



02 EVALUATE

To determine or estimate the significance, quality or value of assessment.



03 IMPROVE

To make something better in a particular way.



04 PLANNING

A detail or a process of thinking and organizing step by step to achieve a desired goal.

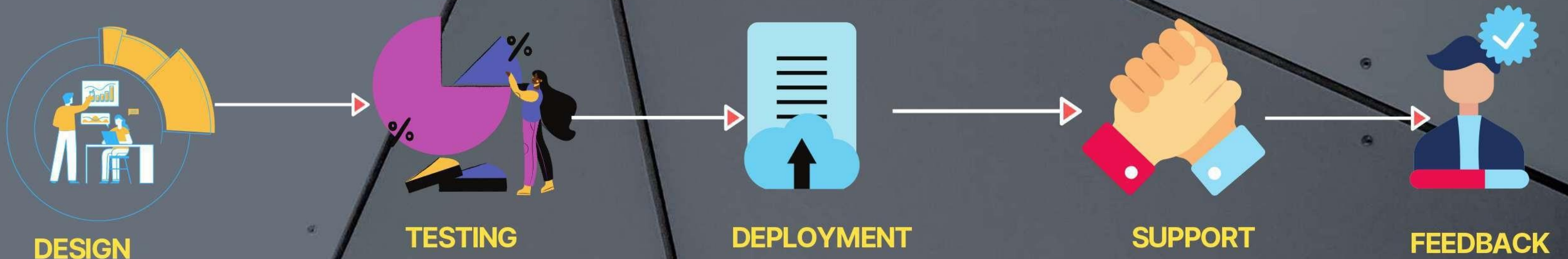


WE ARE NOW ISO9001 AND ISO14001 QUALITY AND ENVIRONMENTAL MANAGEMENT SYSTEMS ACCREDITED.

QUALITY ASSURANCE

We maintain quality through a five step process that includes Project Planning and Kick-Off Meetings, document monitoring during preparation, Interdisciplinary coordination checks, independent review by Architectural Concepts staff, and a final review by all project leaders jointly.

- Fit for purpose - The product should be suitable for the intended purpose
- Right first time - Mistakes should be eliminated



Corporate Work Spaces



To cater to the specific, high quality, specific designing requirements of the commercial establishment. We have highly efficient and expert teams,.. making things the way the clients need and have imagined. Creating reality From imaginations...







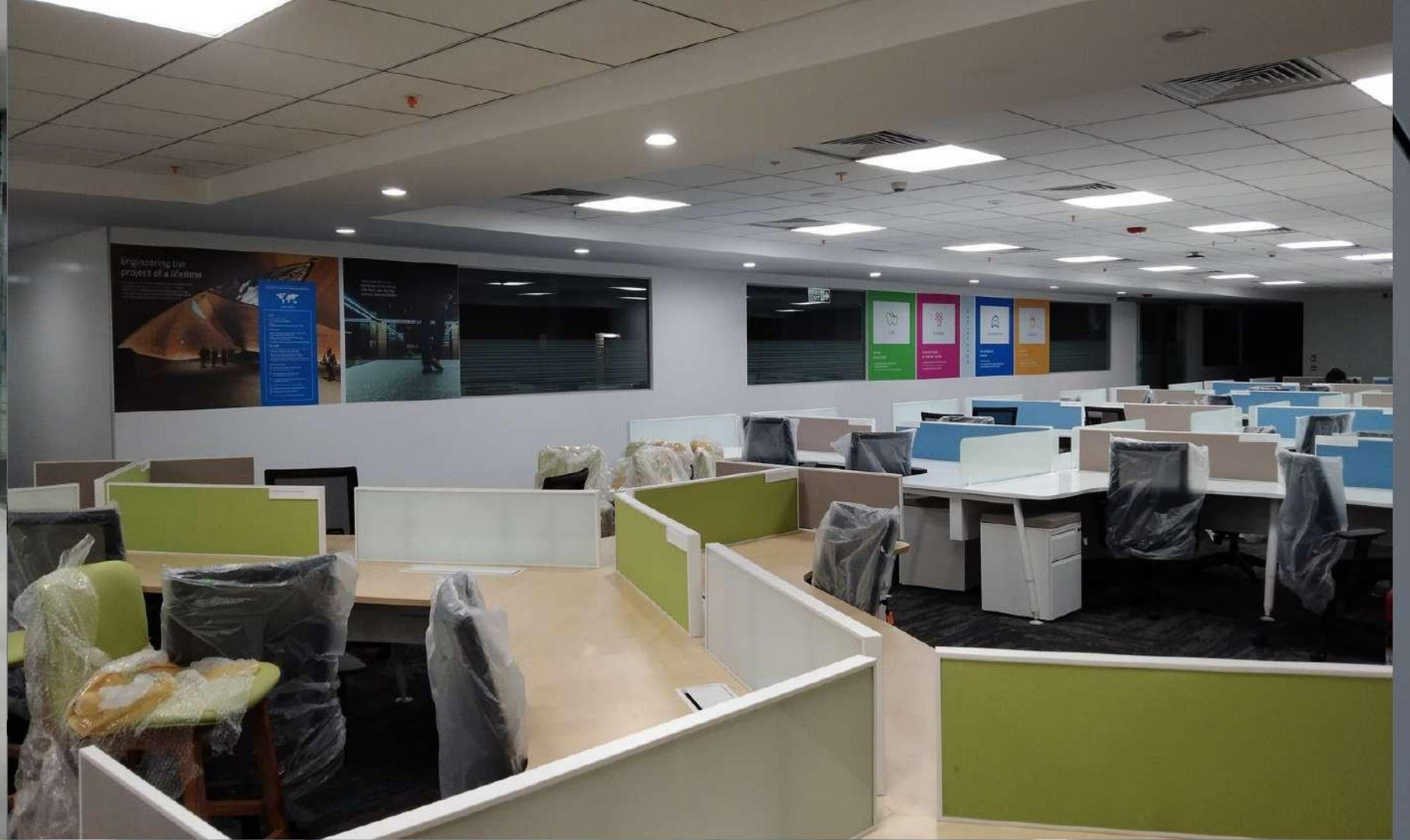


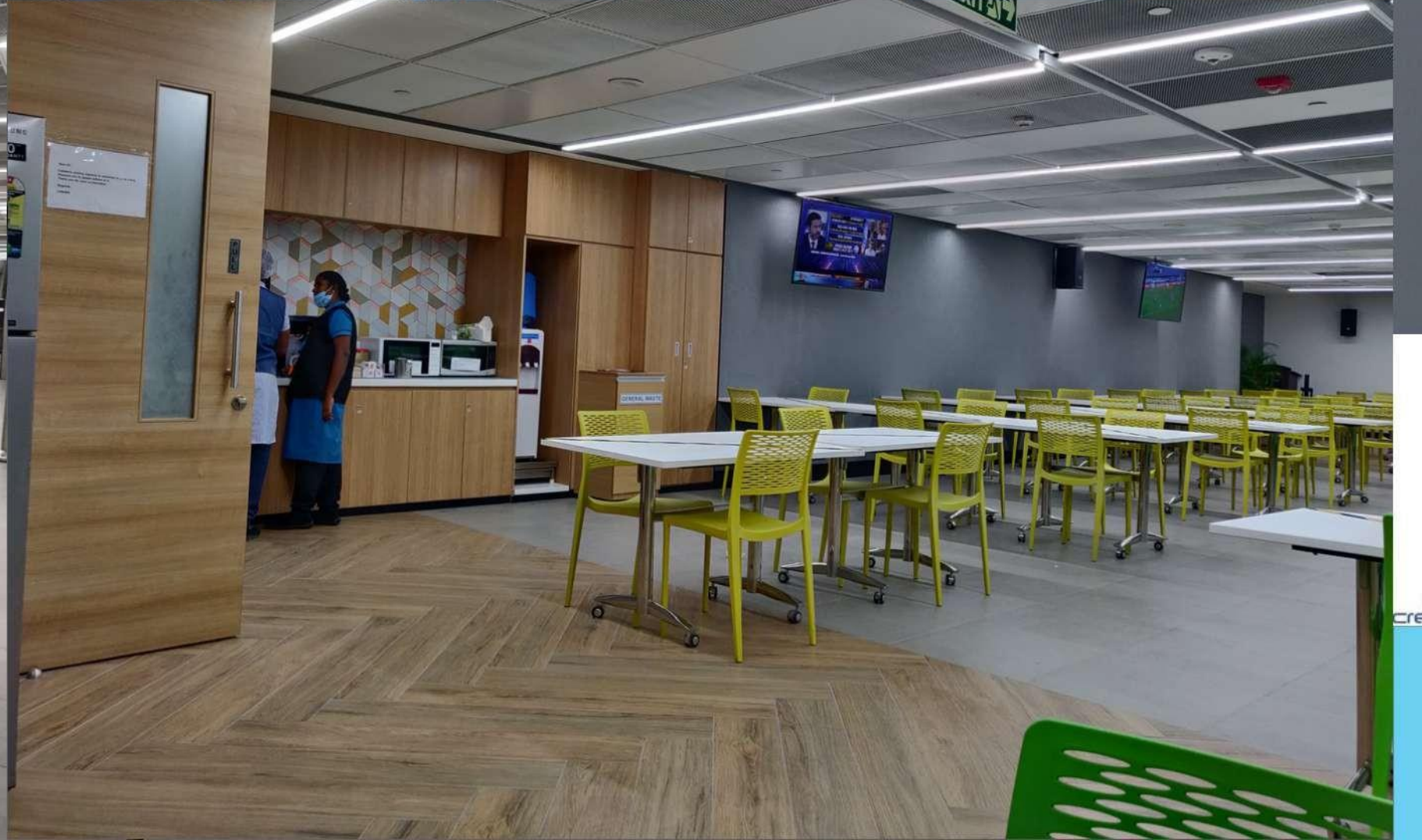
















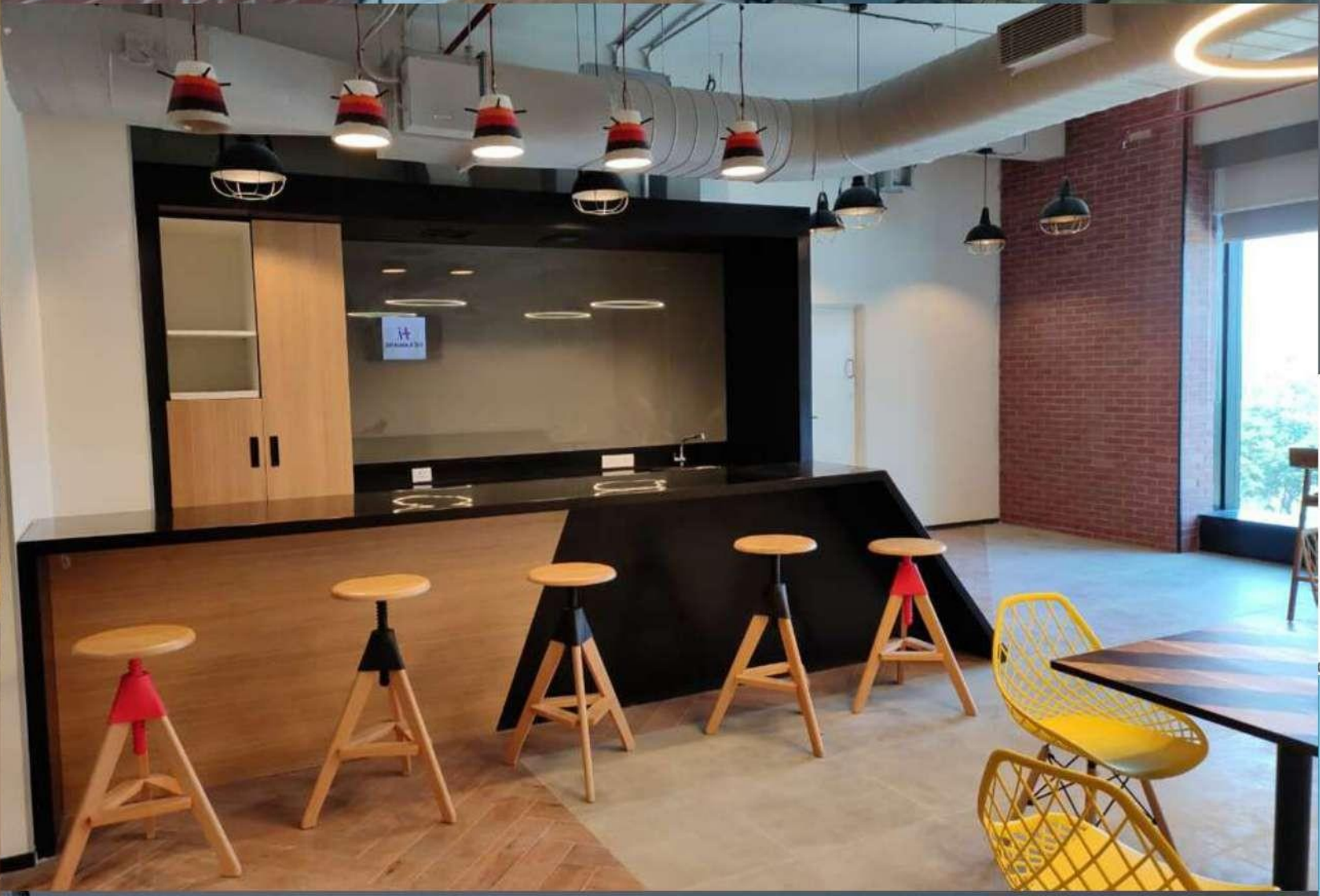
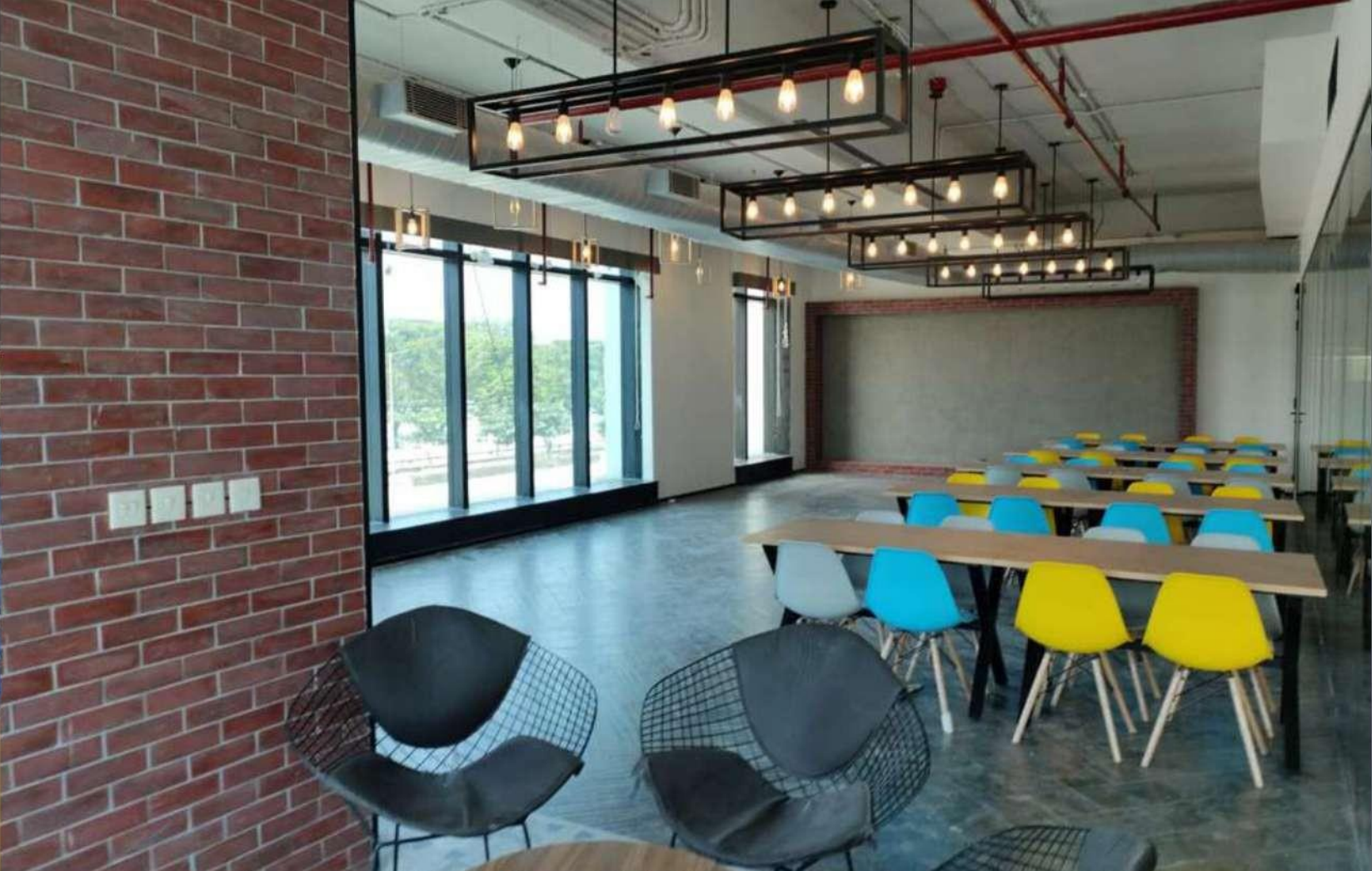
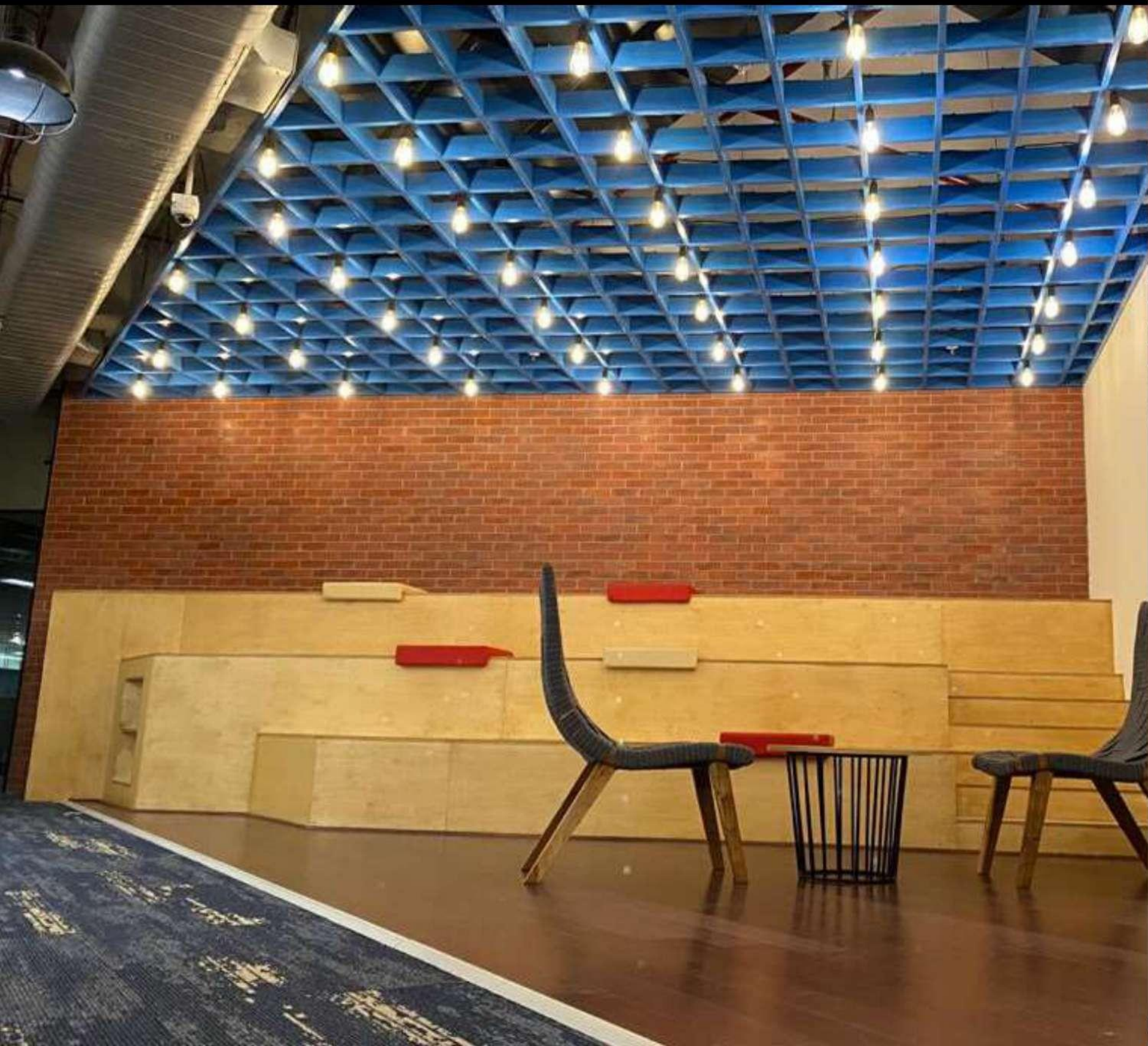
CORPORATE: NISSAN

LOCATION : TRIVANDRUM

SCOPE : INTERIORS & SERVICES



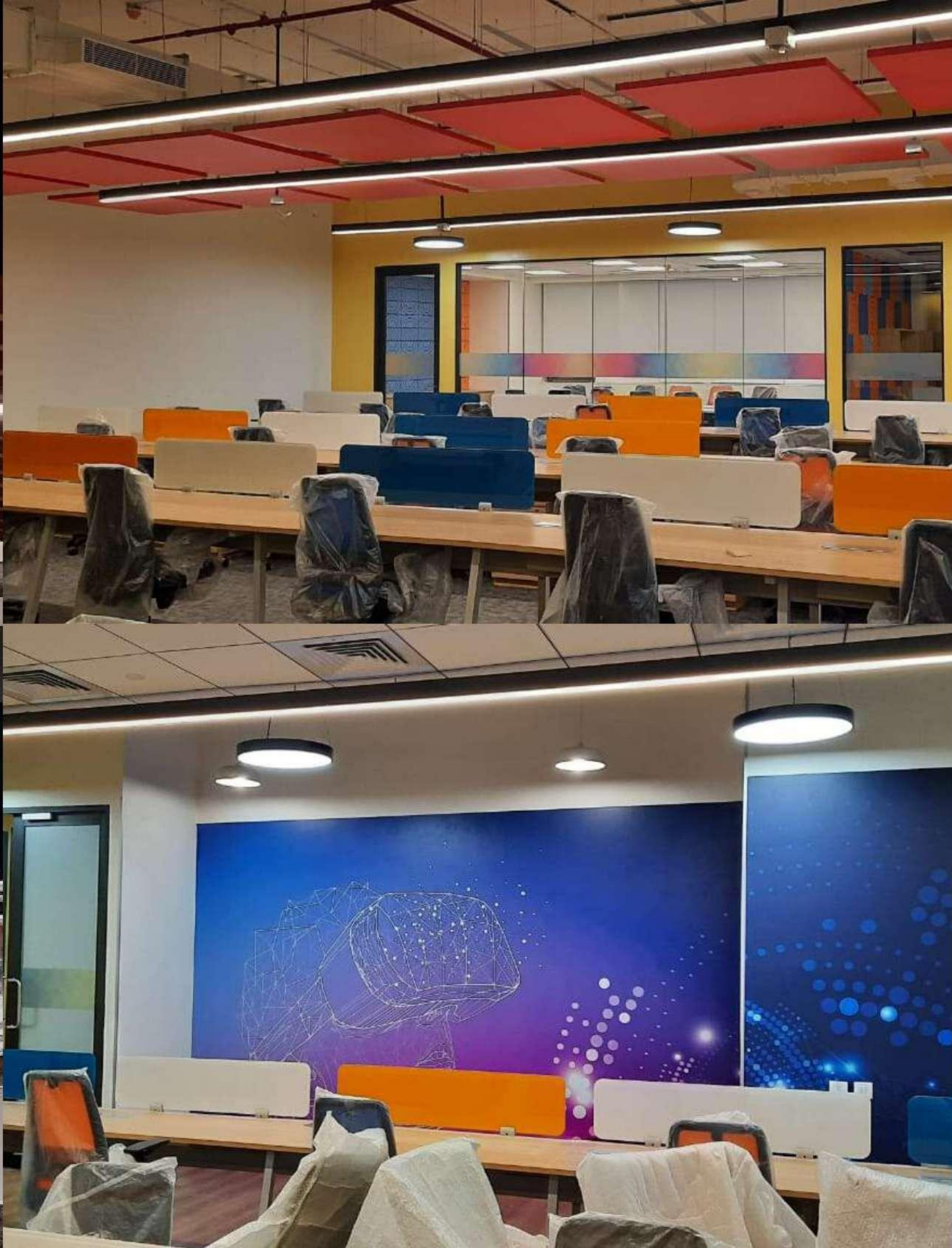
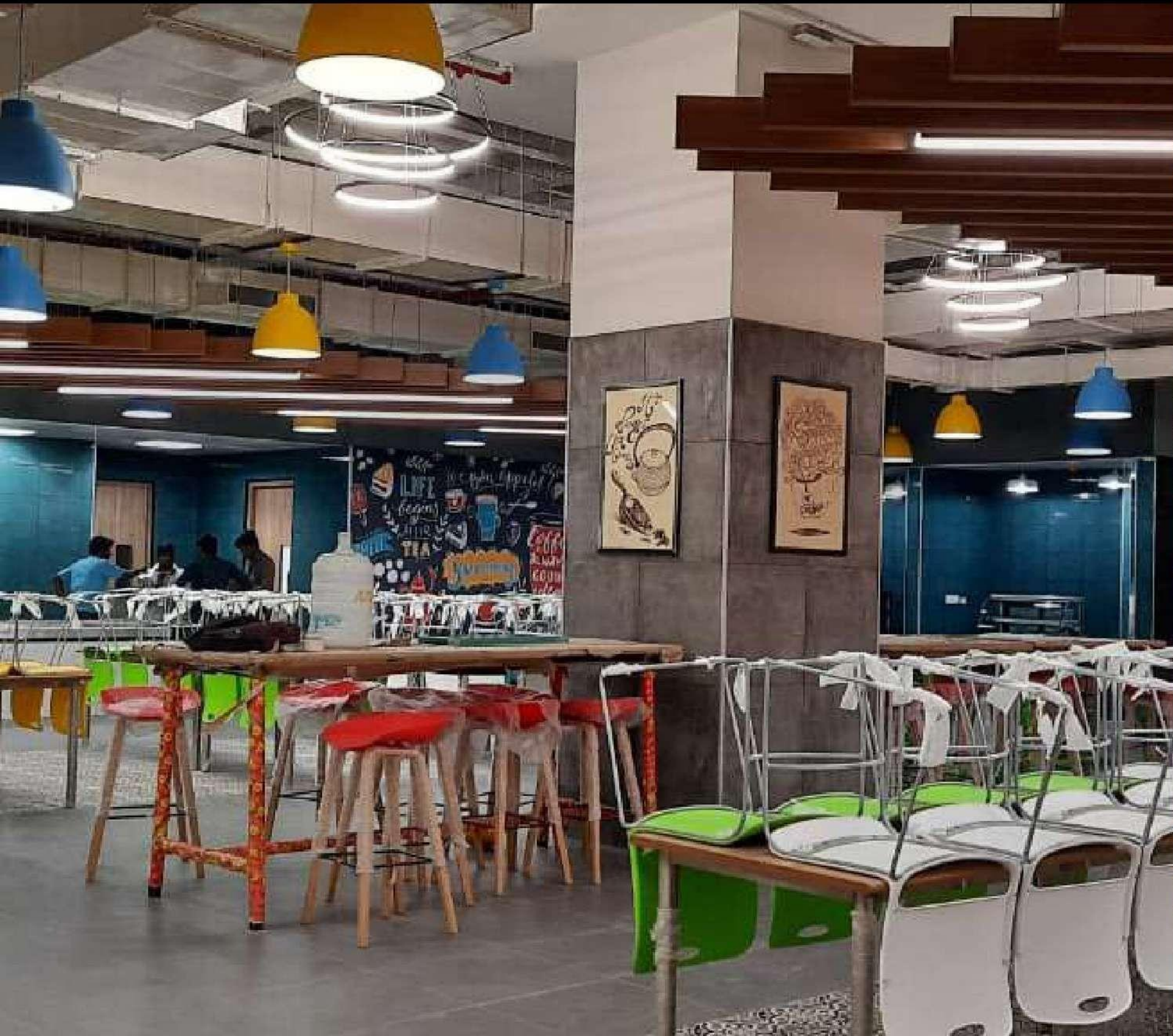
ADYA INTERIORS PRIVATE LIMITED



CORPORATE: ACCENTURE

LOCATION : EMBASSY, CHENNAI

SCOPE : CIVIL & INTERIORS



ADYA INTERIORS PRIVATE LIMITED



CORPORATE: CAPGEMINI EXPERIENCE CENTER ,CHENNAI

This is the first of this kind in south india and this project is designed with more of comfortable work space with innovative design concepts

LOCATION :CHENNAI

SCOPE :TURNKEY INTERIORS



CORPORATE: RISLAND - SALES OFFICE INTERIOR

LOCATION : PERUNGUDI, CHENNAI

SCOPE : CIVIL & INTERIORS



CORPORATE: OERLIKON

LOCATION : CHENNAI

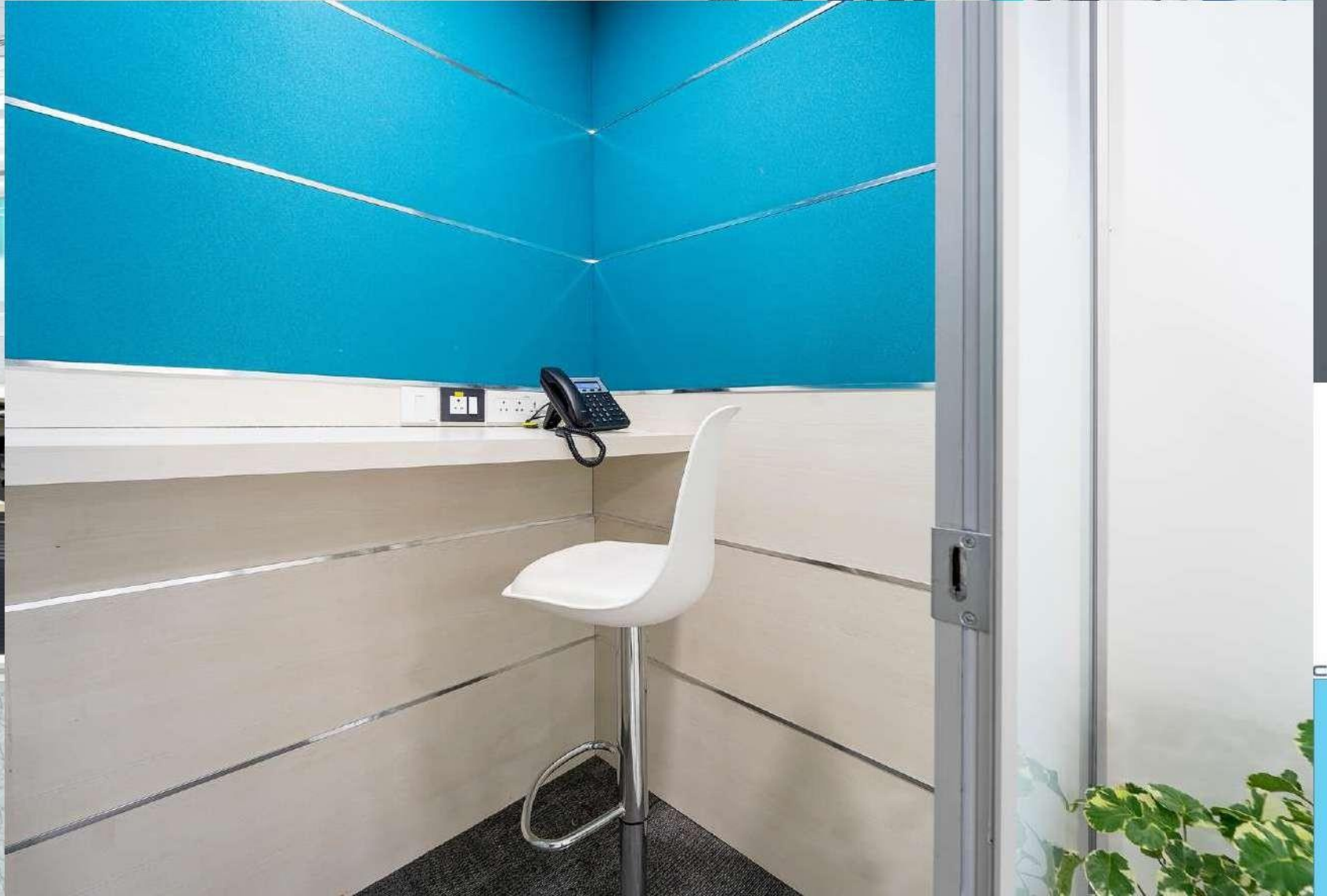
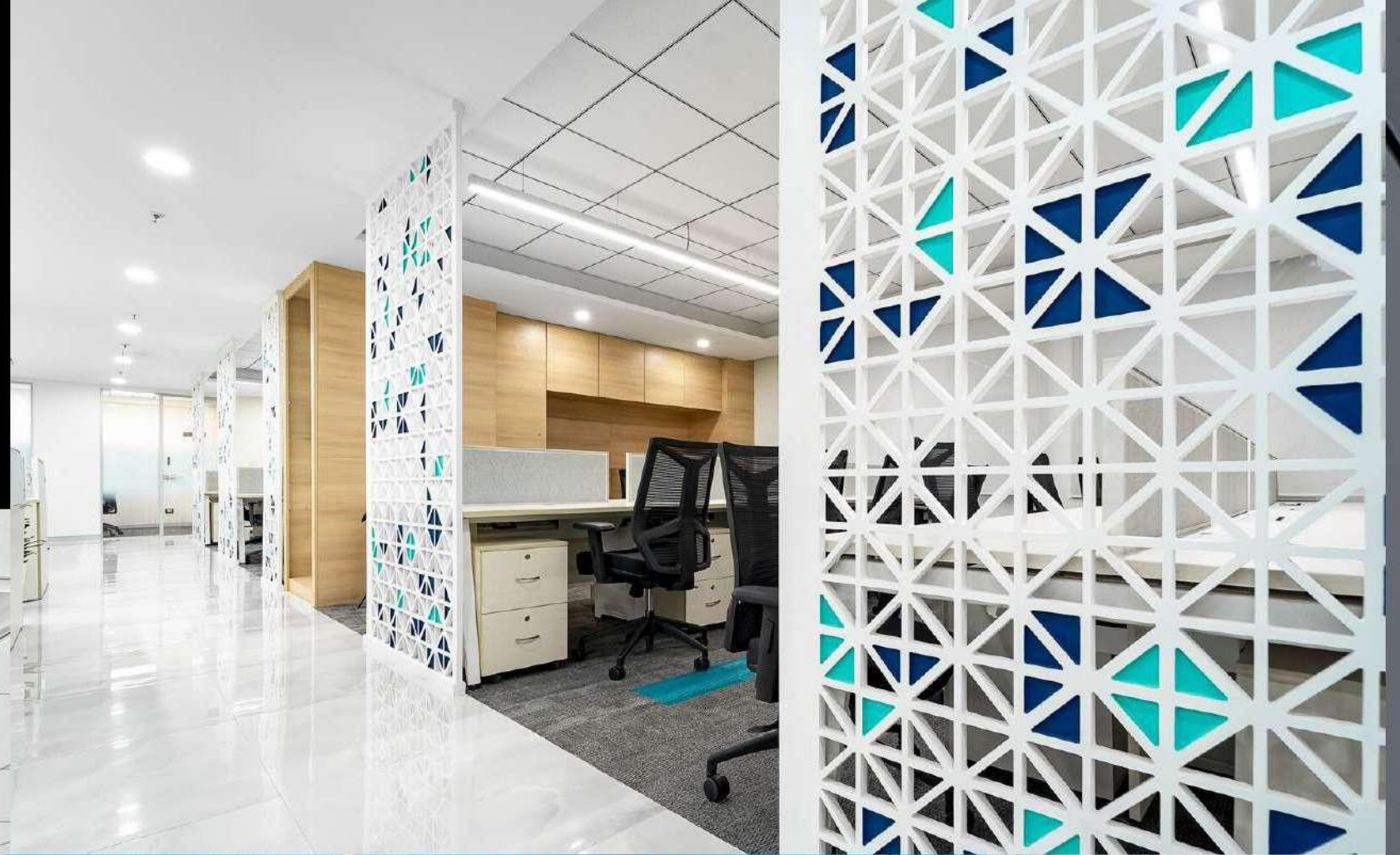
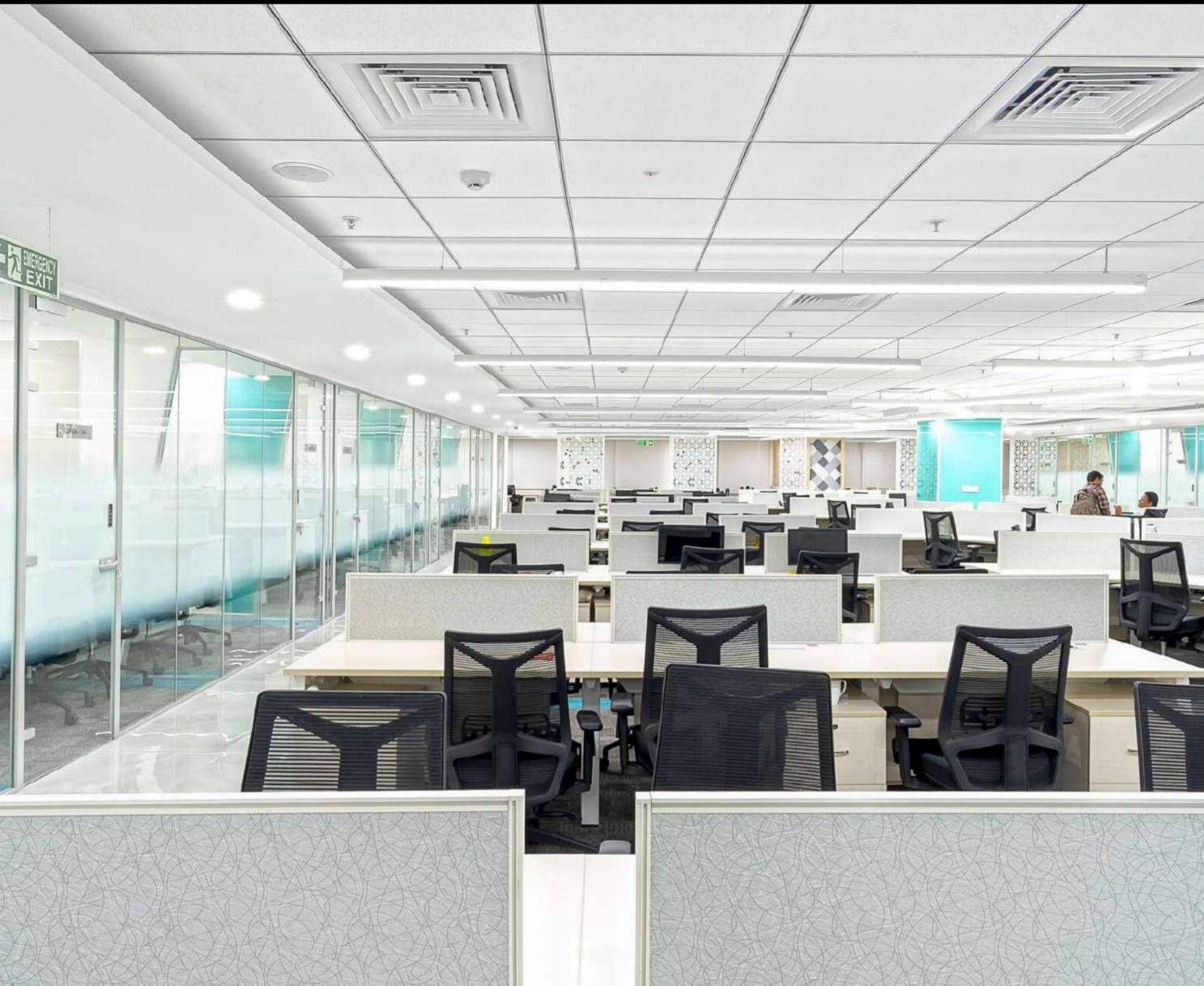
SCOPE : TURN KEY INTERIORS



CORPORATE: TECHNOSOFT

LOCATION : OLYMPIA TECH PARK, GUINDY, CHENNAI

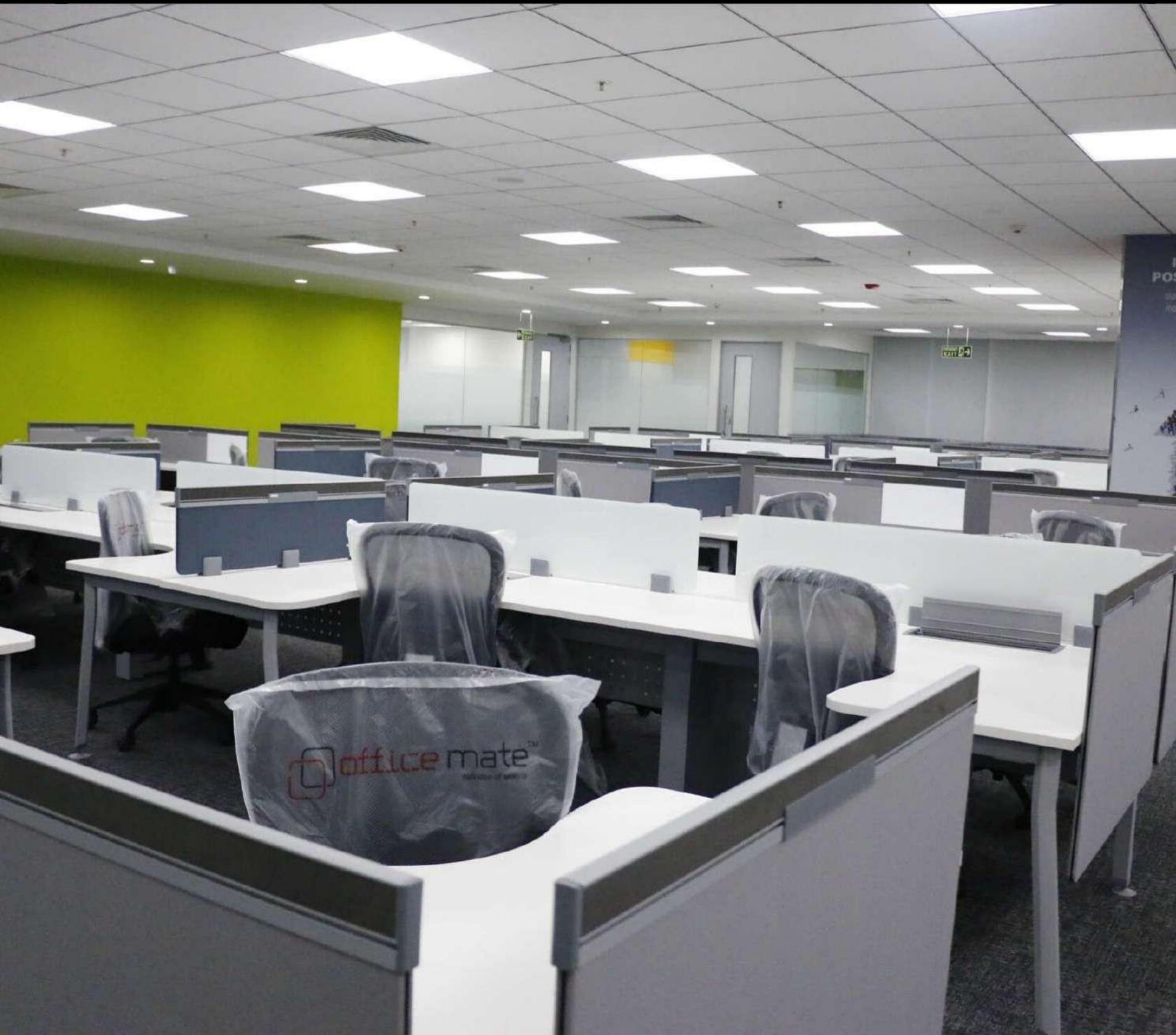
SCOPE : CIVIL & INTERIORS



CORPORATE: SCHAWK

LOCATION : CHENNAI

SCOPE : CIVIL & INTERIORS



CORPORATE: KY YBA

LOCATION : CHENNAI

SCOPE : TURNKEY INTERIORS



ADYA INTERIORS PRIVATE LIMITED



CORPORATE: LOGICA

LOCATION : CHENNAI

SCOPE : RENOVATION OF INTERIORS



CORPORATE: MC DERMOTT

LOCATION : CHENNAI

SCOPE : TURN KEY INTERIORS



ADYA INTERIORS PRIVATE LIMITED

CORPORATE: DIMENSIONAL DATA

LOCATION :NUNGAMBAKAM, CHENNAI

SCOPE : CIVIL & INTERIORS



PROJECT:ATHER ENERGY

LOCATION : HOSUR

SCOPE : CIVIL & INTERIORS



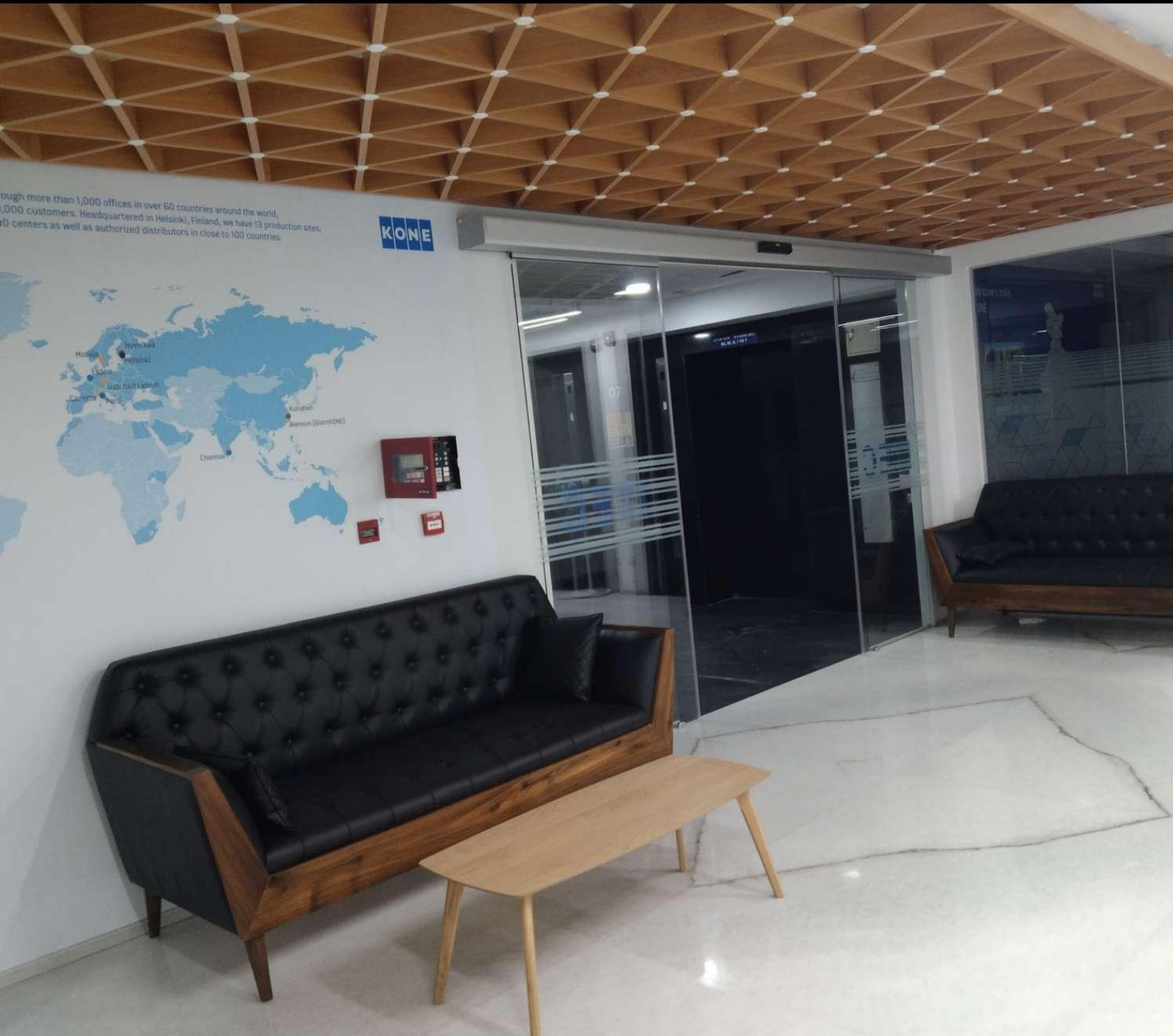
ADYA INTERIORS PRIVATE LIMITED



PROJECT:KONE

LOCATION : AMBATTUR, CHENNAI

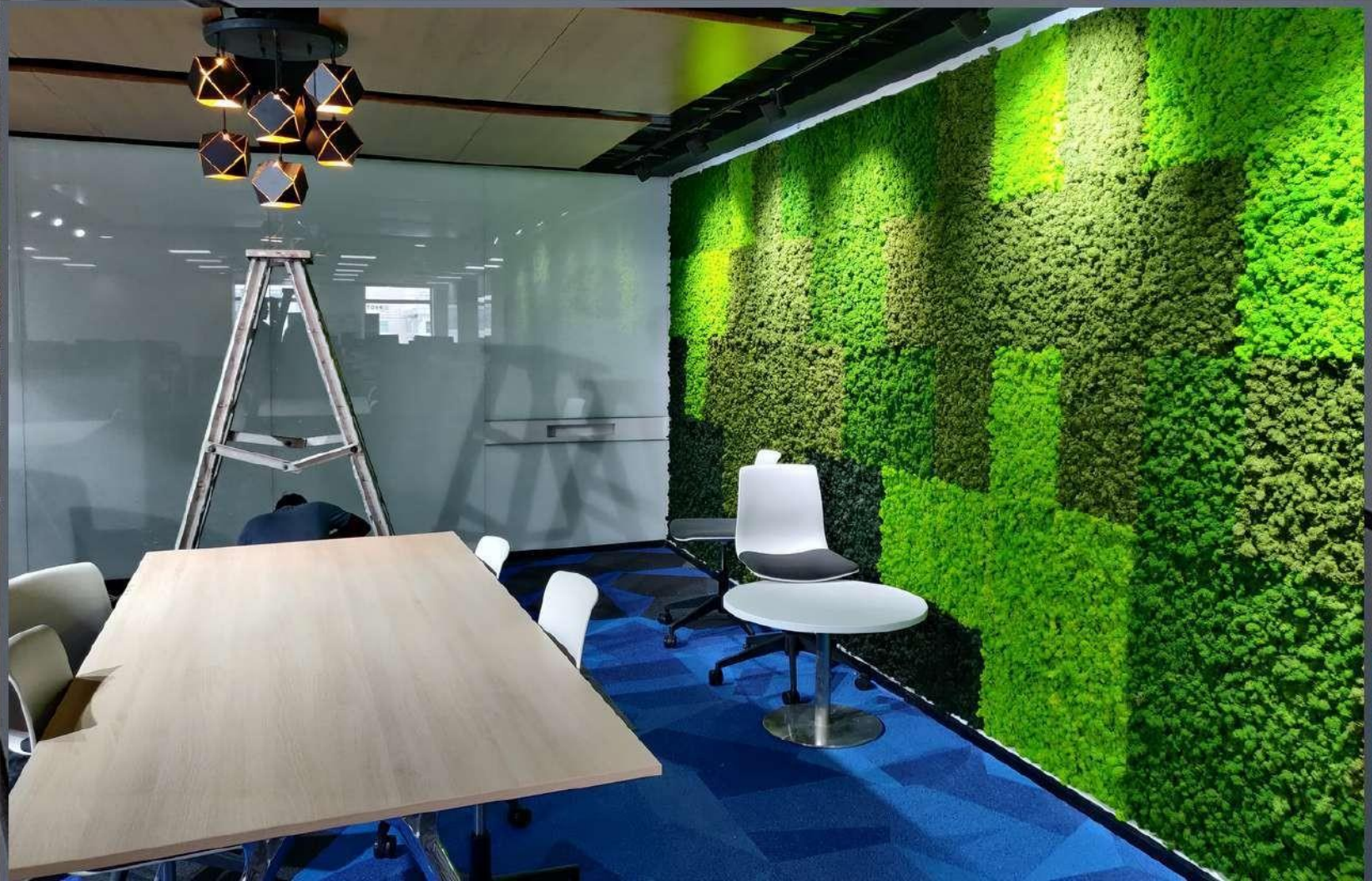
SCOPE : CIVIL & INTERIORS



PROJECT: SOCIETIE GENERALE

LOCATION : DLF, CHENNAI

SCOPE : CIVIL & INTERIORS



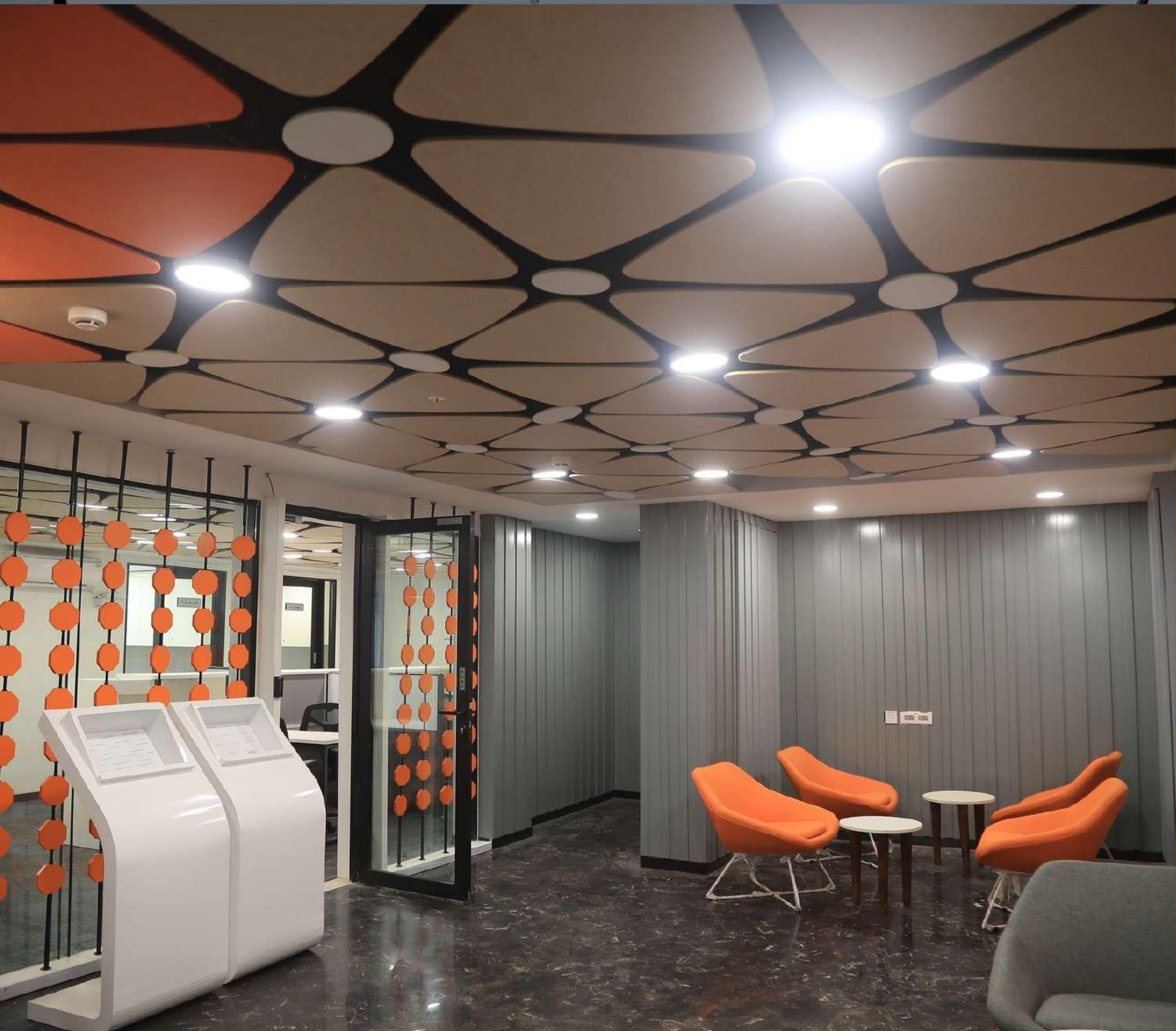
ADYA INTERIORS PRIVATE LIMITED



PROJECT: AZENT

LOCATION : VIJAYAWADA

SCOPE : TURNKEY INTERIORS



ADYA INTERIORS PRIVATE LIMITED



Retail Designing & Execution



WE HAVE CATERED A LONG LIST OF PRODUCT DISPLAY ROOMS WITH A WIDE SPECTRUM OF EXQUISITE DESIGN LAYOUTS WITH OUR SATISFIED ESTEEMED CLIENTS WE HAVE ATTAINED A POSITION OF PRIDE



COMMERCIAL SPACE

CLIENT: RADO

LOCATION :MARKET CITY, CHENNAI

SCOPE :TURN KEY INTERIORS

RETAIL SPACE

CLIENT: HELVETICA

LOCATION :EXPRESS AVENUE, CHENNAI

SCOPE : TURN KEY INTERIORS



ADYA INTERIORS PRIVATE LIMITED

HOTELS & RESORTS

CLIENT: PURAVANKARA

LOCATION : CHENNAI

SCOPE : CIVIL & INTERIORS



HOTELS & RESORTS

CLIENT: INDROYAL

LOCATION : TRIVANDRUM

SCOPE : CIVIL & INTERIORS



COMMERCIAL SPACE

CLIENT: AUDI

LOCATION :CHENNAI, BANGALORE & MANGALORE

SCOPE : TURN KEY INTERIORS



COMMERCIAL SPACE

CLIENT: PHOENIX MARKET CITY

LOCATION : CHENNAI

SCOPE : TURN KEY INTERIORS



*PURVA
WINDERMERE
PHASE 02 ,
CHENNAI*



Interiors Is Amount Making Peoples Happy



ADYA INTERIORS PVT LTD



INTERIORS ARE ABOUT MAKING PEOPLES HAPPY



ADYA INTERIORS PVT LTD

DESIGN TO EXPRESS IT WILL IMPRESS

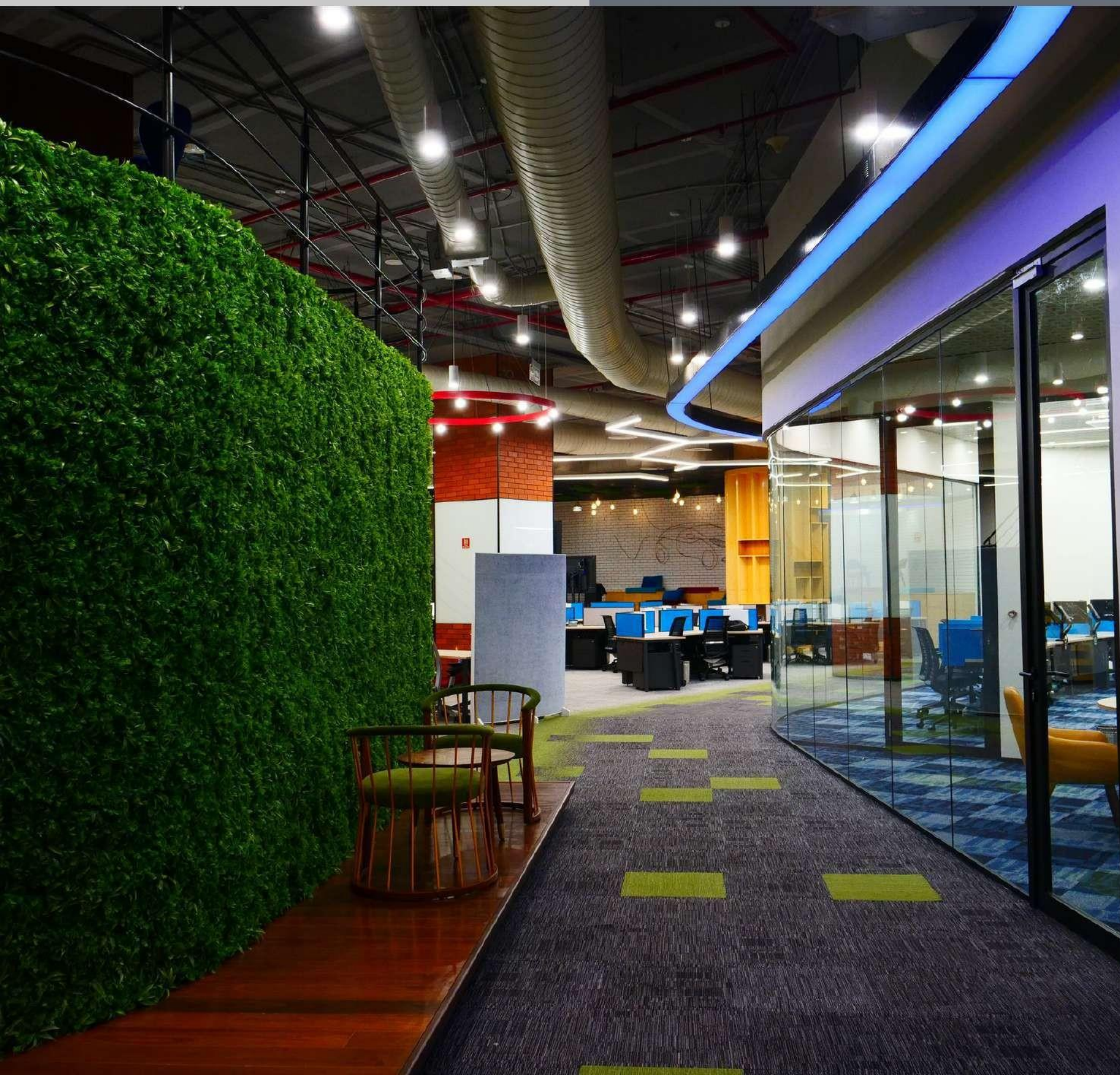


Our Clients

ONGOING PROJECTS

- 1.DLF Down town - Taramani 5 lakh sft
- 2.TVS electronoics - Bangalore
- 3.OLA electric - Hosur
- 4.Ola corporate office - Bangalore
- 5.Provident Ecopolitan - Bangalore
- 6.Brigade Kino Clubhouse Orchards - Bangalore
- 7.Brigade Deccan Heights - Bangalore
- 8.Brigade WTC Annexe - Bangalore
- 9.Puravankara Windermere - Chennai
- 10.Brigade WTC Aliation - Chennai
- 11.SSN University - Chennai
- 12.SRM University - Chennai
- 13.Featherlite - Chennai
- 14.Ather Electric - Hosur
- 15.IITM Enarka - Corporate office Chennai ETC.,



Contact us

B1 , Burma Colony , 2nd Main Road , Perungudi , Chennai - 600096

Tamil Nadu - Kerala - Telangana - Karnataka - Andhra Pradesh



(+9144 43326366) , (+9144 24961064)



info@adya.co



www.adya.co



+917667669441

SOCIAL MEDIA



<https://www.facebook.com/adyainterior>



https://www.instagram.com/adya_interiors/



<https://www.linkedin.com/company/3596773/>



<https://twitter.com/adyainteriors>

The detailed images are the "artwork " issued by Adya Interiors Pvt. Ltd. (the company) being it's intellectual property; unless otherwise specified or expressly consented in writing by the company, it cannot be used, modified, mirrored or copied and/or transferred with or without consideration, in manner by any person or entity. The company reserves all rights on its intellectual properties.

